

PROGETTO AMBITO 10

Castano Primo

TIPOLOGIA: Villa 2 piani - Tip. D 129 mq

PIANTE ARREDATE

PIANTE QUOTATE

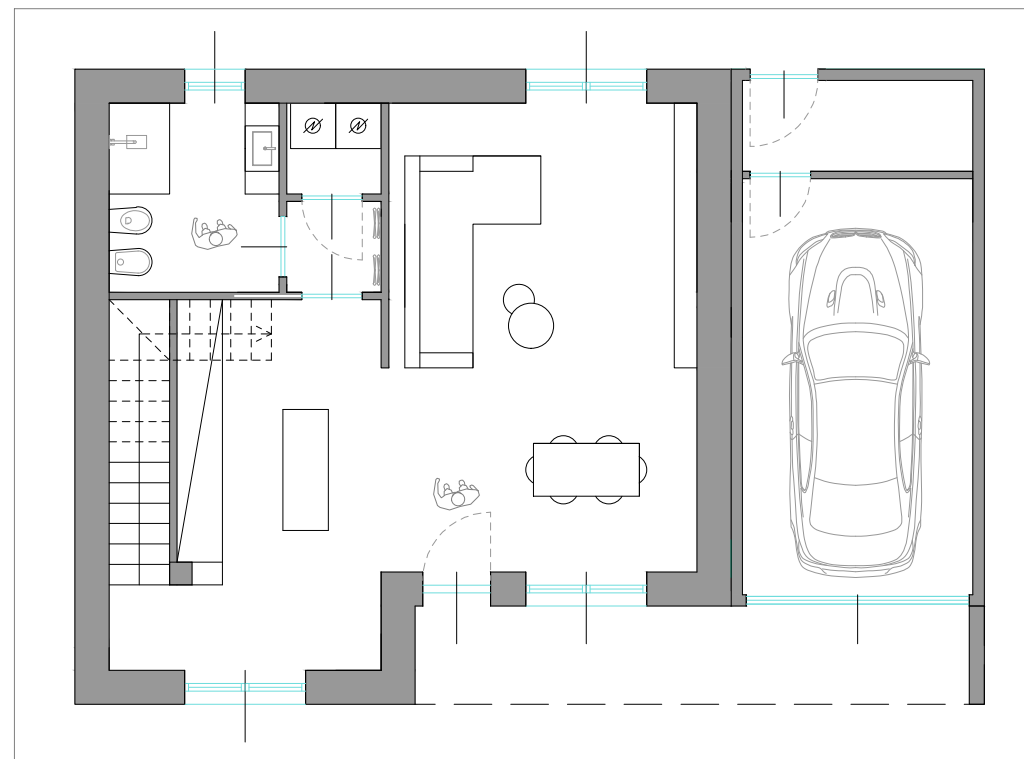
DATI:

Sup. lorda abitazione: 129,11 mq.

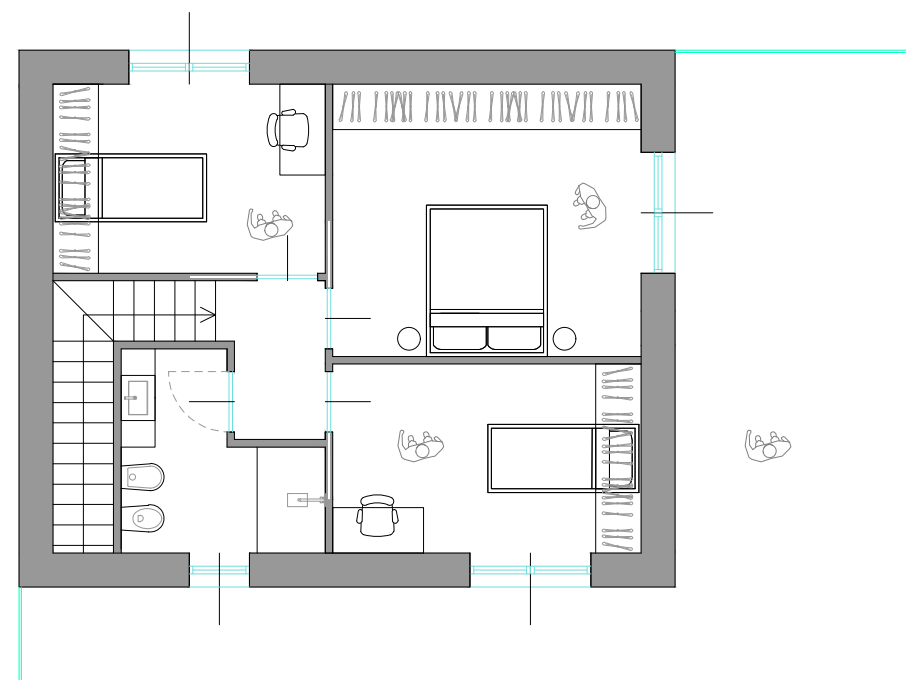
Sup. lorda accessori: 23,78 mq.

Sup. terrazzo P1: 39,42 mq.

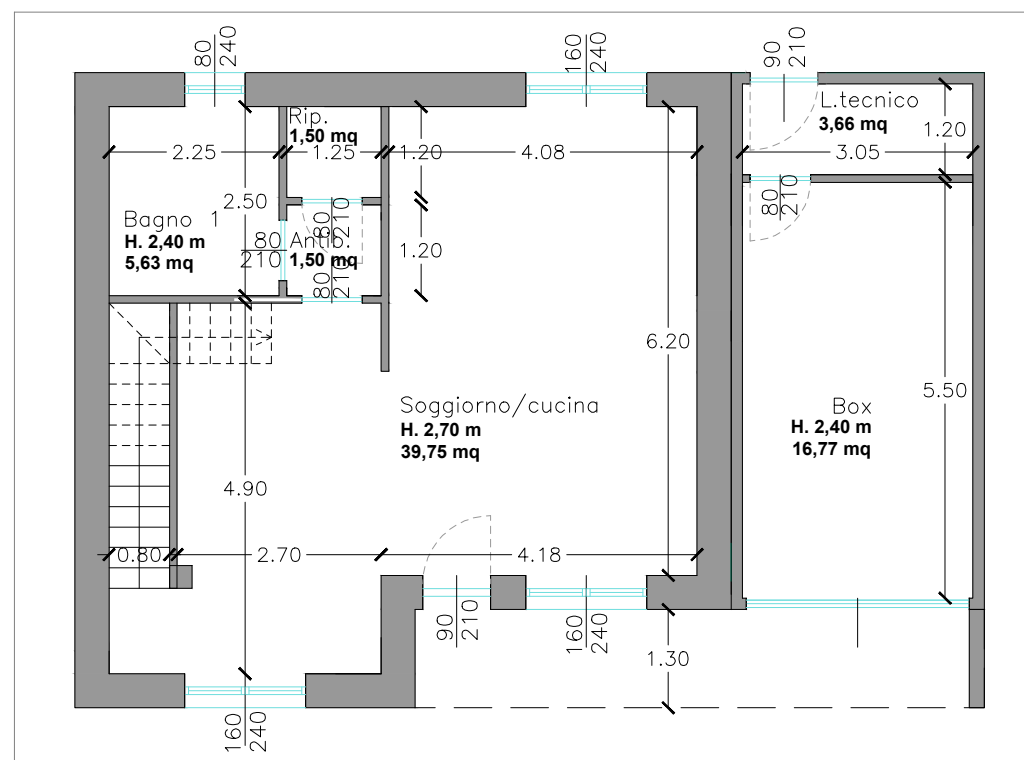
Sup. loggia PT: 9,79 mq.



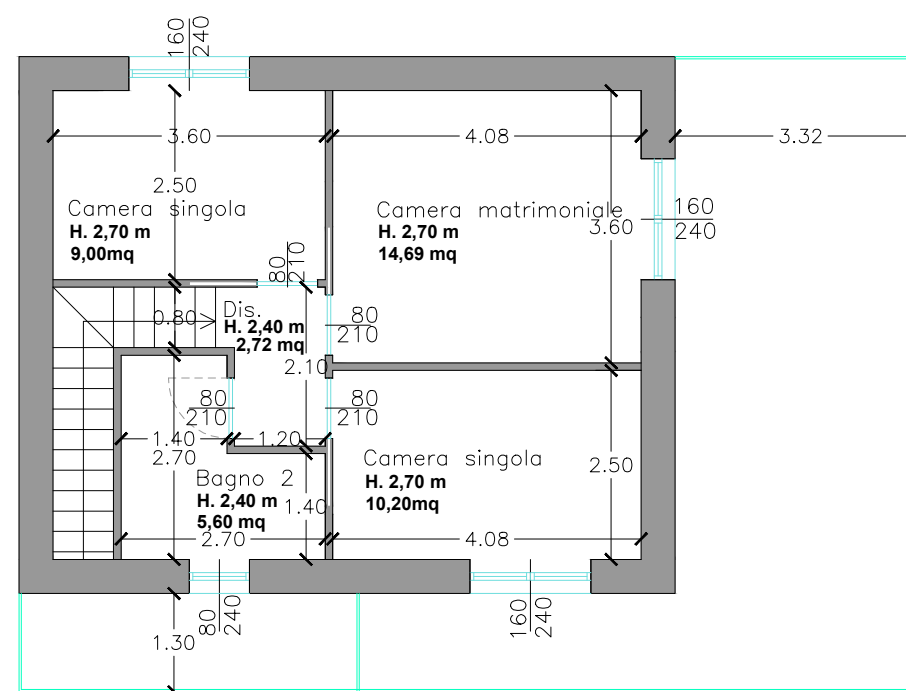
PIANO TERRA



PIANO PRIMO



PIANO TERRA



PIANO PRIMO

PROGETTISTA:

Arch. Giovanni Ferrario

COLLABORATORI:

Ing. Valentina Macchi

Designer Sara Antinea Assoni

Arch. Paolo Torresan

DATA: SETTEMBRE 2025

REV.:

D separate