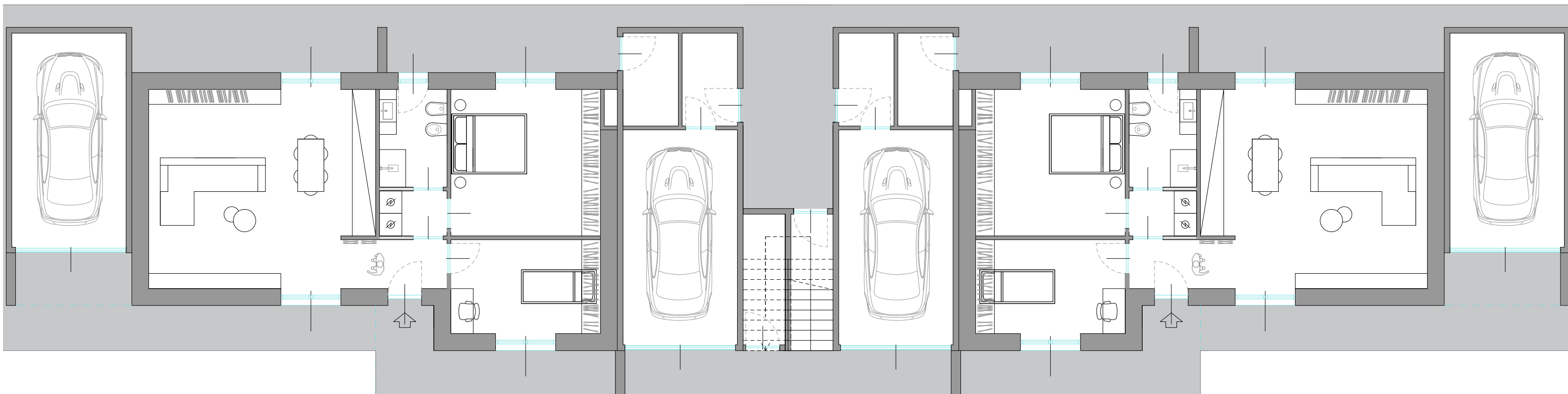
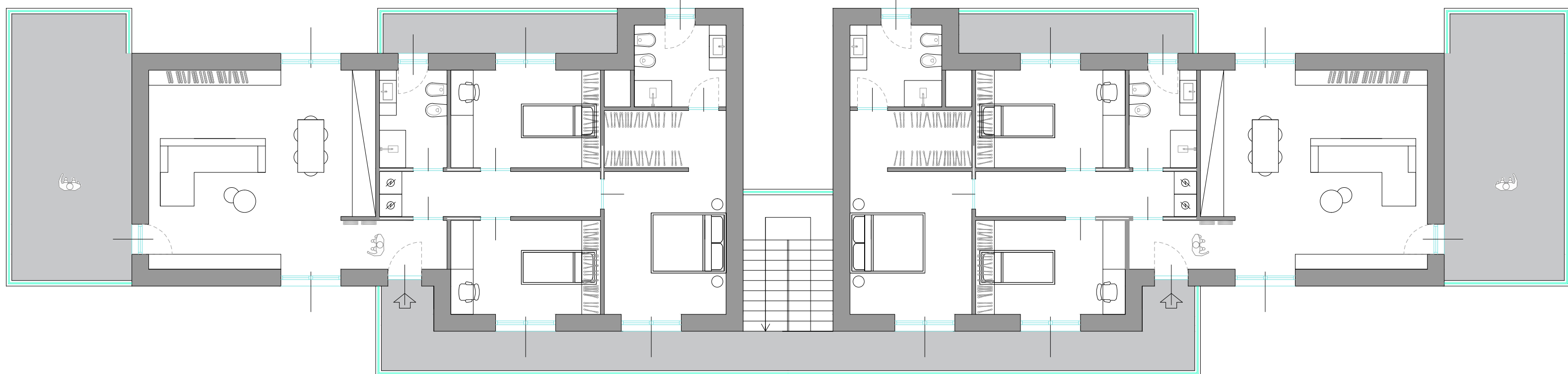


PIANO TERRA



PIANO PRIMO



PROGETTO
ECOLIFE PARK
Castano Primo

TIPOLOGIA: App. in Villa - Tip. B
PIANTE ARREDATE

DATI:

UNITA' PIANO TERRA

Sup. lorda abitazione: 86,10 mq.
Sup. lorda accessori: 24,66 mq.
Sup. portico: 40,62 mq.

UNITA' PIANO PRIMO

Sup. lorda abitazione: 114,91 mq.
Sup. lorda accessori: 24,24 mq.
Sup. terrazzi: 46,07 mq.

PROGETTISTA:

Arch. Giovanni Ferrario

COLLABORATORI:

Ing. Valentina Macchi

Designer Sara Antinea Assoni

Arch. Paolo Torresan

DATA: NOVEMBRE 2025

B unite

REV.: