

PROGETTO
ECOLIFE PARK
Castano Primo

TIPOLOGIA: Villa 2 piani - Tip. D 129 mq

PIANTE ARREDATE

DATI:

Sup. lorda abitazione: 129,00 mq.

Sup. lorda accessori: 23,78 mq.

Sup. portico/terrazzo 58,74 mq.

PROGETTISTA:

Arch. Giovanni Ferrario

COLLABORATORI:

Ing. Valentina Macchi

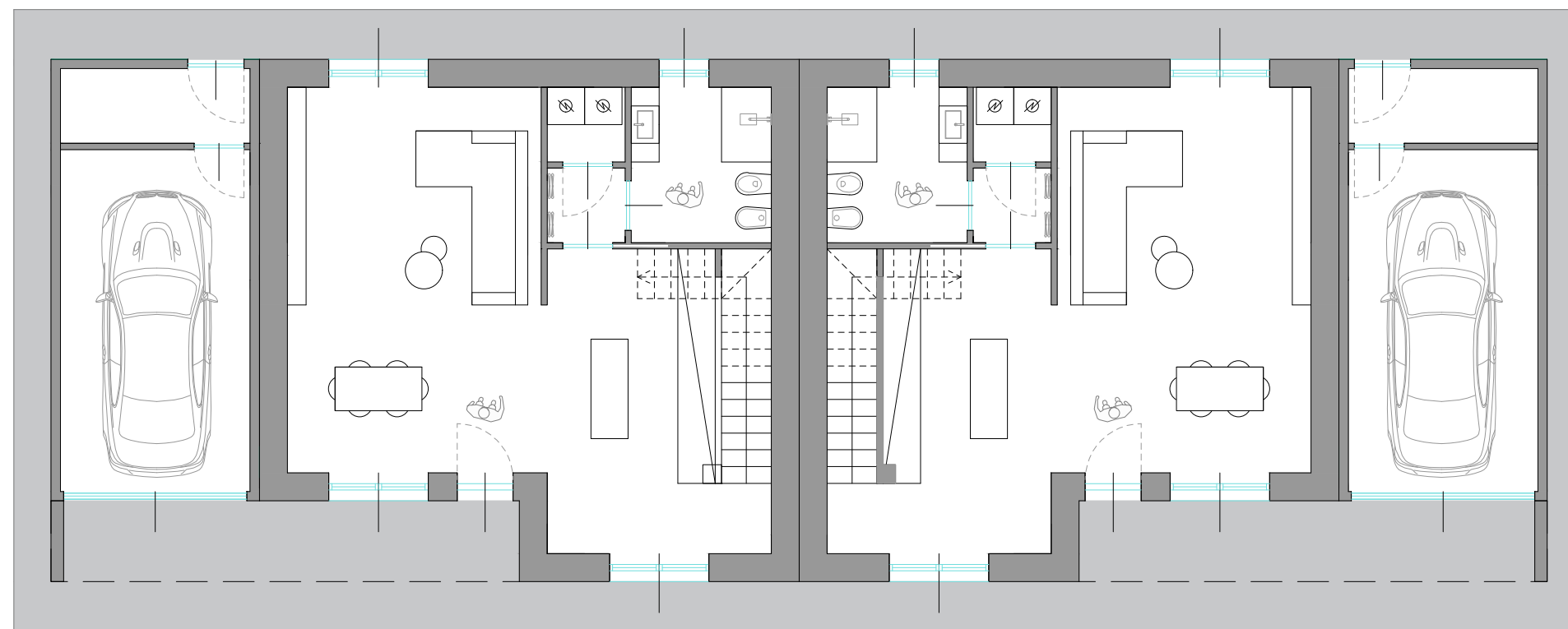
Designer Sara Antinea Assoni

Arch. Paolo Torresan

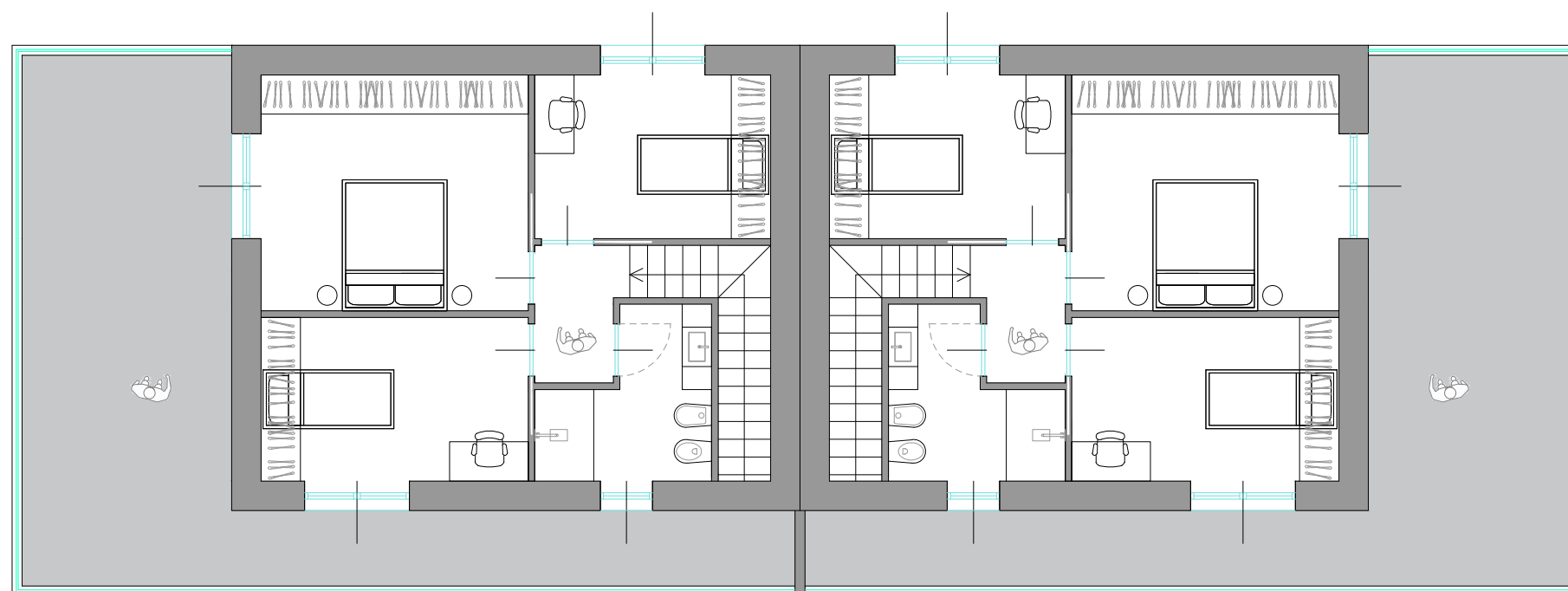
DATA: NOVEMBRE 2025

REV.:

D unite



↑
PIANO TERRA



PIANO PRIMO